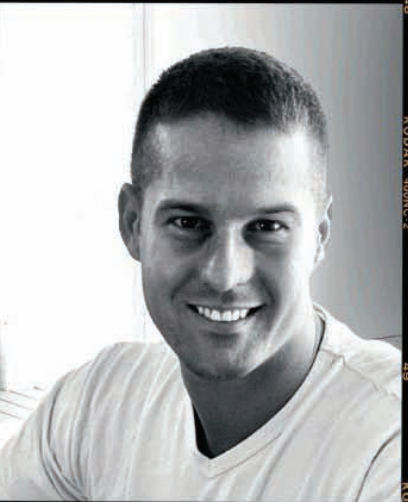


THE INTERIOR DESIGNERS

Our expert designers have taken inspiration for their mood boards from paintings, photographs, design movements, places, moments in time and, of course, their own treasured belongings. CLOCKWISE FROM RIGHT: Jason Sullivan, Ryan Russell, Scott Weston, Nadine and Romaine Alwill, Greg Mellor, Melissa Collison, Imogen Naylor and Leroy Belle.



1 'Lyon Glazed Linen' in Arabica, from Westbury Textiles. 2 Mauritanian woven palm wood and leather mat, designer's own. 3 Taxidermy turtle, designer's own. 4 Dutch frame, from Charles Hewitt Gallery. 5 Flowers by Grandiflora. 6 Eighteenth-century painted Italian torchères, from Howell & Howell. 7 *Still Life with Ham*, by Pieter Claesz. 8 'Lime Wash' paint in Chalkboard Green, from Porter's Paints. 9 Bricks, from Aeria Country Floors. 10 Table lamp in the style of Giacometti, from Howell & Howell. 11 *Still Life with the Drinking-Horn of the St. Sebastian Archers' Guild, Lobster and Glasses*, by Willem Kalf. 12 Verellen 'Charlotte' two-seater sofa, from Cavit & Co. 13 'Lime Wash' paint in Villa, from Porter's Paints. 14 Schumacher 'Abaza Resist' linen/cotton blend fabric in Charcoal, from Orient House. 15 Schumacher 'Tigre Linen Print' linen fabric in Golden Brown, from Orient House. 16 French artichoke basket, \$950, from The Country Trader. 17 'Lime Wash' paint in Eden, from Porter's Paints. 18 Starburst mirror, from Tyrone Dearing. 19 Trophies and spoons, designer's own.

OLD WORLD

Greg Mellor

INSPIRATION I've always loved still-life paintings by the Dutch and Flemish Old Masters. I love their patina, which a good interior should also have, whether it be modern, classic or traditional. Although time plays an important role, the artist's layering technique, together with the layering of the objects, helps create that patina. That, to me, is the goal of a successful interior. These paintings display elements of theatrics, humour and drama while remaining underpinned by the same principles of all art and design: proportion, scale, symmetry (or deliberate asymmetry) and technique.

PERSONAL STYLE Rooms should look lived in, and comfort is paramount. I lived in a severe minimalist house once – it was exhausting, and we never properly engaged with it. Interiors, even simple, casual ones, should have layers: layers of colour – subtle and more obvious – and layers of texture in the furniture, soft furnishings and decorative accessories. I like to have something quirky or amusing in every interior – rooms should never be taken too seriously.

